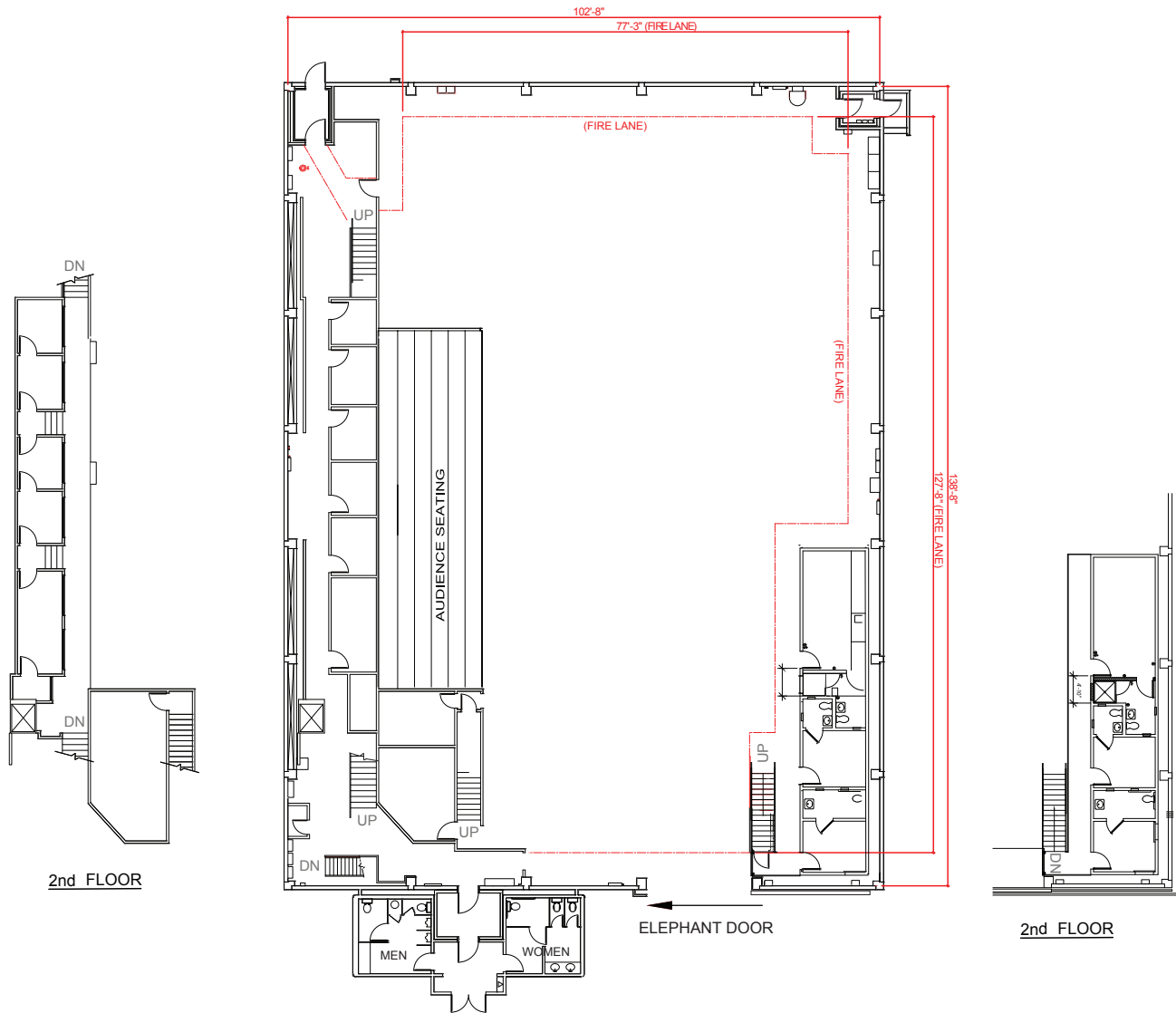


# STAGE 20 (AUDIENCE)



## **STAGE SIZE:**

(102' x 138') 14,076 sq. ft.  
Audience rated A-3  
Maximum crew & audience = 299

## **LIVE LOAD CAPACITY OF FLOOR:**

Wood floor over concrete

## **HEIGHT:**

35' to the permanents with catwalks above

## **BUILT-IN ROOMS:**

7 Dressing Rooms with private restrooms (two handicapped), Hair/Make-up Room, 2 Wardrobe Rooms, 2 Prop Rooms, 2 Set Dressing Rooms, 2 Dimmer Rooms, 2 Sound Booths, Camera Room, 2 AD Rooms, Green Room, Electric Room, Grip Room, Full Crafts Service area

## **AUDIENCE CAPACITY:**

Approx. 185

## **FALL PROTECTION:**

100% Tie-off Horizontal Lifeline system

## **ELECTRICAL:**

D.C. Lighting: 4800 amps/120 volts  
A.C. Prod. Lighting: 500 KVA Transformer  
120/208 volts  
4-400 amp bull switches  
3840 total amps

Basic House/Building Power: 600 amps  
120/240 volts  
Single Phase

AC Spider: 225 amps  
120/240 volts  
Single Phase from Basic House Power

Power for Equipment: 3 Phase:  
200 amps  
240 volts\*\*  
\*\*Local 40 tie-in required

## **ELEPHANT DOORS:**

One door approximately: 18' Wide x 24' High

## **HVAC:**

Silent air conditioning

## **WATER:**

On four perimeter walls  
Full sink in Crafts Service Area

\*Stage dimensions to be field verified

Downloadable PDF available at  
[www.foxstudios.com/stage](http://www.foxstudios.com/stage)

## **FOX PRODUCTION SERVICES**

10201 W. Pico Blvd, Los Angeles, CA 90064

310-FOX-INFO | [foxinfo@fox.com](mailto:foxinfo@fox.com) | [www.foxstudiolot.com](http://www.foxstudiolot.com)

™ & © 2019 Fox and its related entities. All rights reserved.

# FOX